



Sep 17, 2013 - Present

# CURRICULUM



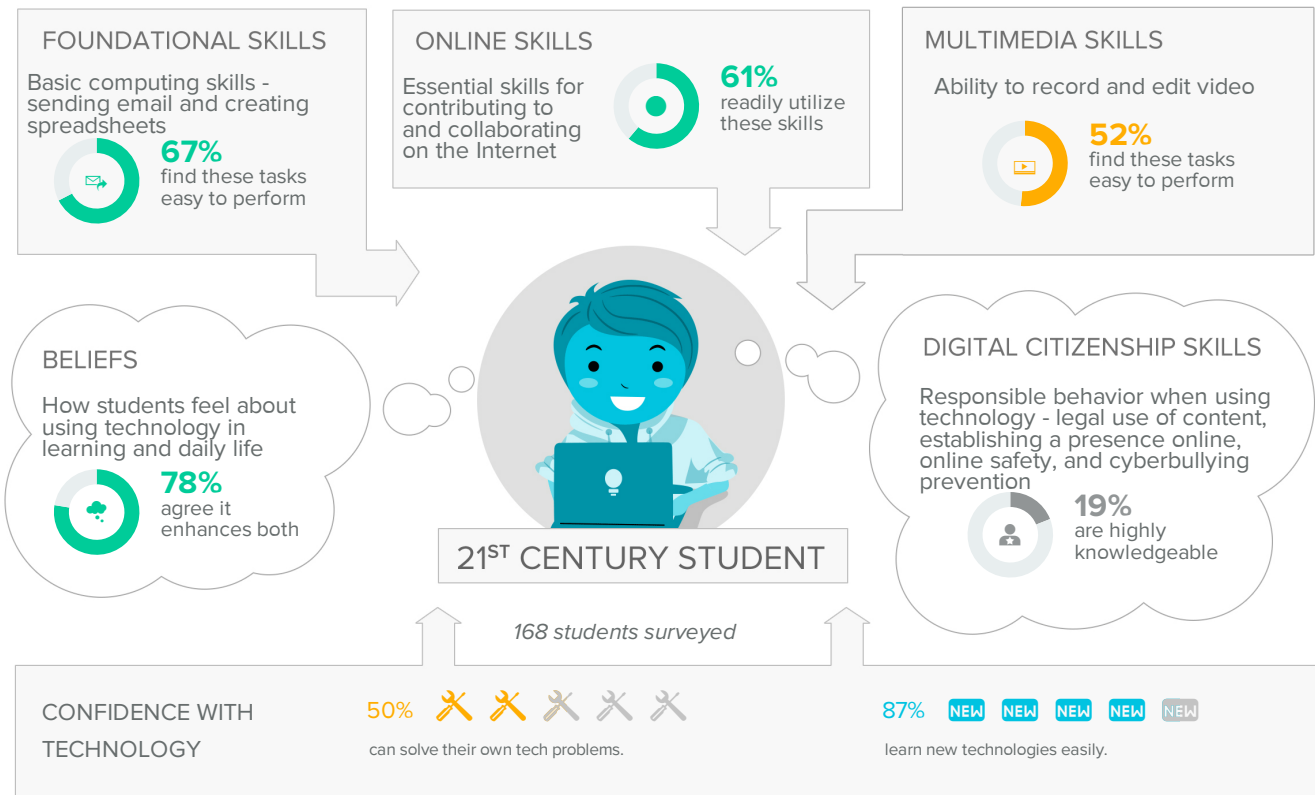
Although today's students are digital natives with many skills in social networking, the majority of them are not social learners with the ability to apply complex technology skills to everyday challenges.

Classrooms that prepare students for college and career seamlessly integrate technology into daily instruction in a way that intentionally scaffolds students' technology skills. Although today's students are digital natives with many skills in social networking, the majority of them are not social learners with the ability to apply complex technology skills to everyday challenges.

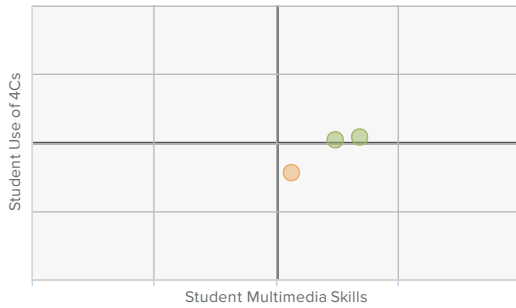
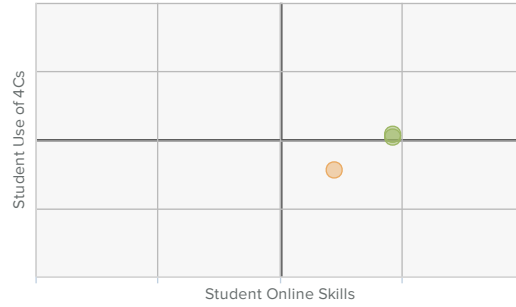
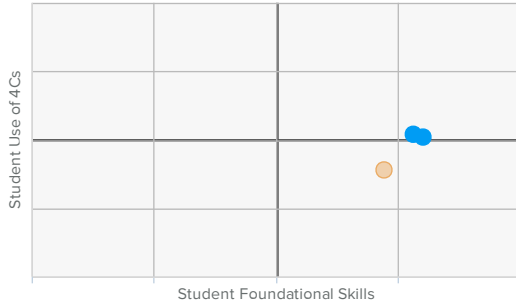
Furthermore, students' everyday experiences are seamlessly interwoven with digital devices and instant communication. In order to meet students "where they are," technology instruction must be infused in every subject area. Teachers are aware of this trend. According to a national Pew survey, 95% of students regularly use the Internet.

Given this, a modern curriculum must purposefully include incremental technology-infused skill acquisition. However, the design of every effective curriculum begins by considering the unique needs of the learners. Although students are comfortable tweeting and surfing the web, they still need support to use technology for productivity tasks such as creating spreadsheets and sending professional email.

Being aware of students' skill profiles with technology can greatly inform the development of a cohesive, integrated curriculum that allows students to build the technology skills sets necessary for college and career.



**Scatterplots**



CASE™ Score Legend

● Beginning	● Emerging	● Proficient	● Advanced	● Exemplary
800-899	900-999	1000-1099	1100-1199	1200-1300

**SCHOOL SCORECARD**

Schools	Foundational Skills	Online Skills	Multimedia Skills	Beliefs
Earlham Elementary School	●	●	●	●
Earlham Middle School	●	●	●	●
Earlham Senior High School	●	●	●	●

CASE™ Score Legend

● Beginning	● Emerging	● Proficient	● Advanced	● Exemplary
800-899	900-999	1000-1099	1100-1199	1200-1300